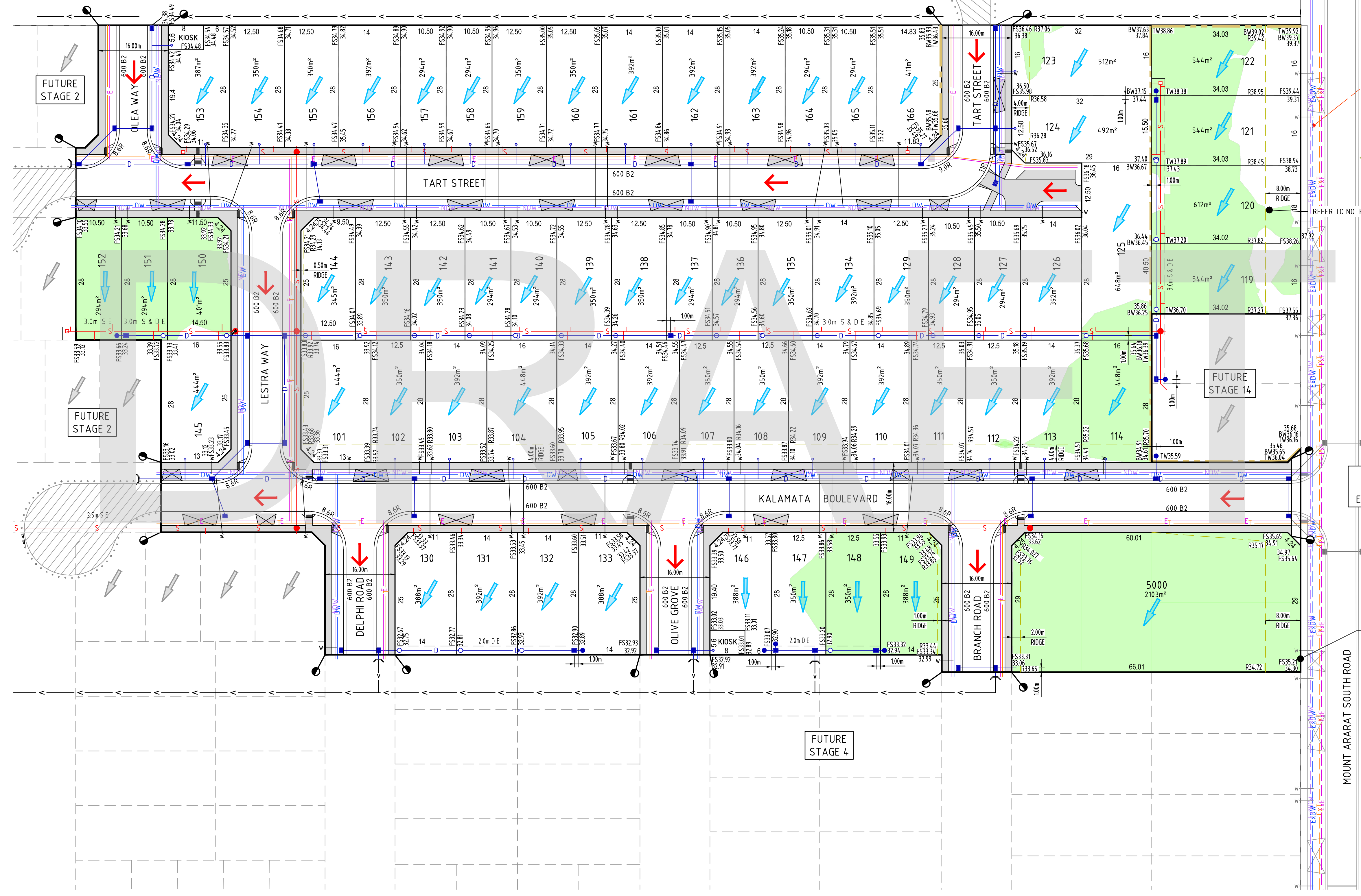


1610 PRINCES HWY DEVELOPMENT (BY OTHERS)

LEGEND		
DESCRIPTION	EXISTING	PROPOSED
FINISHED SURFACE LEVEL	4.3.21	FS44.33
RIDGE LEVEL	R4.3.55	R4.3.55
TOP OF WALL LEVEL	TW4.3.55	TW4.3.55
BOTTOM OF WALL LEVEL	BW4.2.55	BW4.2.55
FILLING GREATER THAN 300mm		
WATER MAIN - DRINKING WATER	ExDW	DW
WATER MAIN - NON-DRINKING WATER	ExNDW	NDW
WATER CONDUITS	W	W
UNDERGROUND ELECTRICITY	ExE	E
TELECOMMUNICATIONS & SERVICE PIT	ExT	T
SEWER & MANHOLE	ExS	S
CENTRAL INVERT	V	V
COUNCIL STORMWATER DRAIN, PIT & HOUSE DRAIN/PROPERTY INLET	ExD	D
CONCRETE VEHICLE CROSSING		
CONCRETE FOOTPATH		
FALL OF DESIGN SURFACE		
100 YEAR OVERLAND FLOW PATH		
LIMIT OF WORKS		
RETAINING WALL		
FENCE - OTHER		

NOTES

- EXTERNAL WORKS - UPGRADE OF MOUNT ARARAT SOUTH ROAD FRONTING STAGE 1 TO INCLUDE THE NECESSARY DRIVEWAYS, FOOTPATHS, AND SERVICE WORKS REQUIRED FOR THE DEVELOPMENT OF LOTS 5000 & 119 TO 122.
- LOT DIMENSIONS NOT SHOWN ARE RECTANGULAR LOTS.

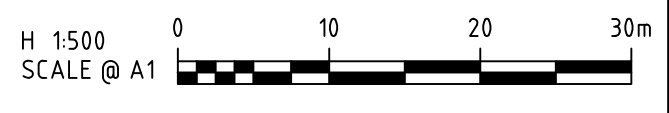


MOUNT ARARAT SOUTH ROAD EXTERNAL WORKS

MOUNT ARARAT SOUTH ROAD

REV	DATE	DRN	CKD	APP	AMENDMENT
C	24.06.24	TP			STAGE 1 REVISED
B	22.04.24	TP	MA	K. LORRIMAR	LEGEND UPDATED
A	19.04.24	TP	MA	K. LORRIMAR	INITIAL ISSUE

**PRELIMINARY ONLY**



COPYRIGHT  
The concepts and information contained in this document are the Copyright of Cossill & Webley Consulting Engineers. Use or copying of the document in whole or part without the written permission of Cossill & Webley Consulting Engineers constitutes an infringement of copyright.  
This plan is not to be used for construction unless issued as revision 0 or higher

**CW Cossill & Webley**  
CONSULTING ENGINEERS  
Street Address  
Level 20, 350 St Kilda Road W cossillwebley.com.au  
Melbourne VIC 3004 T (03) 8548 1560  
E Melbourne.Reception@cosweb.com.au

CLIENT  
**SIG GROUP**  
APPROVED PE 0005927  
DESIGNED  
A MAY  
SCALE  
1:500

PROJECT  
KALA ESTATE - STAGE 01  
TITLE  
MARKETING PLAN  
MUNICIPALITY  
CARDINIA SHIRE COUNCIL  
PP No.  
TBC  
DRAWING No.  
3086-01-999  
REVISION  
C

ORIGINAL SIZE  
A1

C:\3245\cardia\3086-01-999\Drawings\3086-01-999.dwg 6/24/2024 5:23 PM TONY PHAN